



DC Arc Flash Analytic V2.0

User Guide

DC Power System Arc Flash Hazard Analysis and Labeling Software

Table of Contents

- DCAFA V2.0 Key Features & Capabilities
- Installing DC Arc Flash Analytic v2.0
- Registering the Program
- Options Menu
- Units of Measurement
- Managing Protection Device Data Base
- Saving Labels
- Saving Calculation Results
- Opening Results Files
- Saving Equipment Configuration
- Importing Equipment Configuration
- Help About the Program & Contacts



About the program

DC-Arc-Flash-Analytic v2.0 (DCAFA V2.0) is a powerful and easy to use Windows-based program specifically developed to assist in performing arc flash and shock hazard analysis in DC power systems, including but not limited to battery banks, public transportation, power converters and rectifiers, mining sites, telecommunications equipment, solar and wind farms, etc.

DCAFA V2.0 Key Features & Capabilities

The program takes system voltage, available short circuit current, fixed or variable gap between conductors, circuit time constant, equipment class, working distance, protection device type and rating, or a preset arc duration value, and determines incident energy released by arc flash, hazard risk category, arc flash and shock protection boundaries. DCAFA V2.0 is applicable for systems with voltages in the range of 125 to 2000VDC, short circuit currents from 1 to 50kA, circuit time constants from 0 to 50msec.

Among various key capabilities, the DCAFA V2.0 evaluates threshold incident energy for a second degree burn, performs analysis using metric or imperial units, saves input configurations and calculation results for future reference or printing. With DCAFA V2.0, it is also easy to create arc flash warning labels in different electronic formats and languages, thus reducing the cost of obtaining compliance with NFPA 70E and Canadian CSA Z462 standards.

Visit us at www.arcadvisor.com for more On-line and PC based solutions for short circuit, arc flash hazard analysis and labeling.

Installing DC Arc Flash Analytic version 2.0

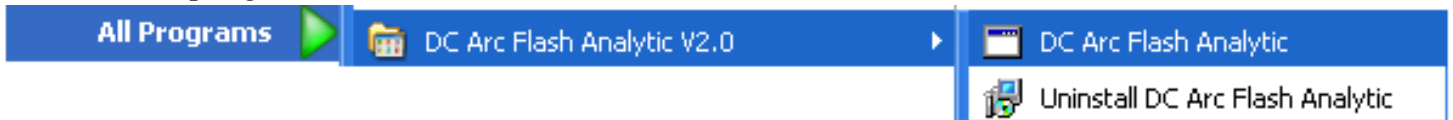
DC Arc Flash Analytic v2.0 (DCAFA V2.0) package comes as a single executable file:

- Download the .EXE file to your PC or insert the installation disk into CD drive
- Double click the EXE file icon to launch the installation wizard
- Welcome screen will appear. Click [Next] button and follow instructions to complete the installation



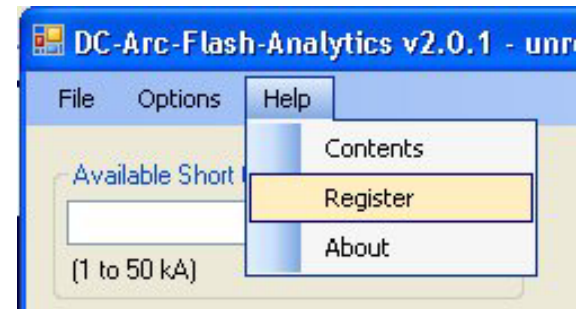
Launching and registering the program

- Click on Windows START button
- Select DC-ARC-FLASH-ANALYTIC V2.0 from Program Manager
- Click on the program icon to launch DCAFA V2.0



The first time the program is launched, you will need to unlock the program features that have been deactivated in unregistered / demo version:

- Click on Help menu
- Select Register option



Registration screen will pop up; please enter your individual DCAFA V2.0 registration credentials including your first and last name, company name and your individual license key exactly as they appear on the letter or email accompanying your DCAFA V2.0 purchase.

NOTE: Registration key comes with the purchase of the software. Please contact us for your individual registration key.

Options Menu

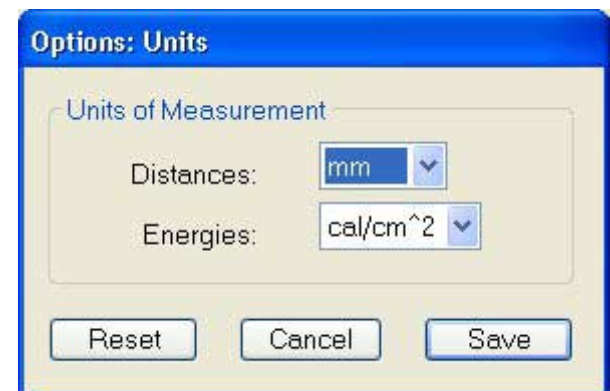
Use Options to manage units of measurement settings and protection device database.

Units of measurement

- Click on Options menu and select Units.

The Units screen will pop up showing default units of measurement for input and output data.

This feature allows you to switch units of measurement for a wide variety of input and output data including arc flash and shock protection boundaries, incident energy, working distance etc. The program would also automatically convert all relevant values to the new units of measurement including input, output data and label readings. The DCAFA V2.0 software will memorize the selected units of measurement and apply them next time the program is launched.

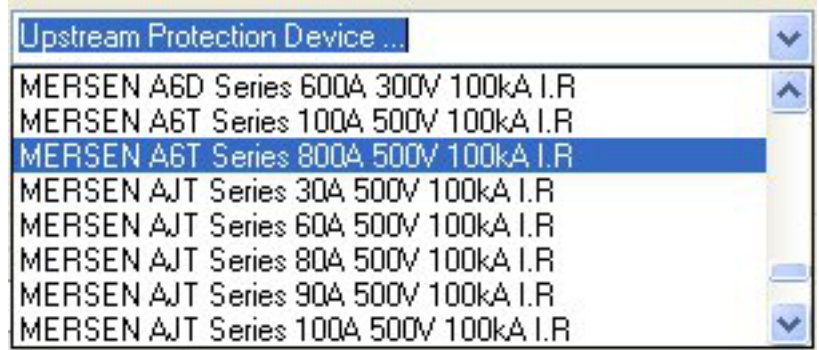
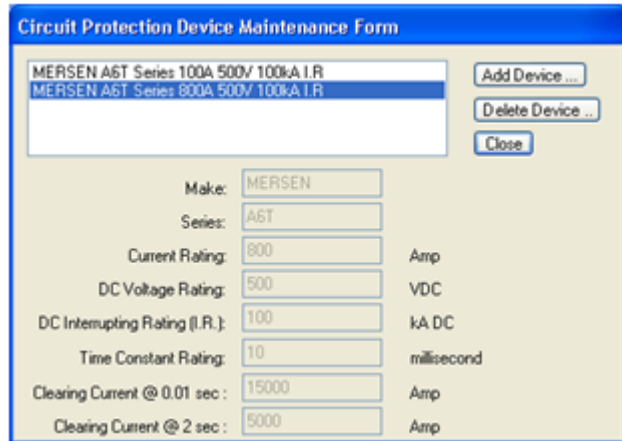


Populating Protection Device Database

- Click on Options menu and select Protection Devices

Circuit Protection Device Maintenance screen will show up.

The feature allows you to add new protection devices not published in DCAFA v2.0 built-in circuit protection device database. You can specify manufacturer name, series, current rating, rated voltage, interrupting rating and the device clearing characteristics data for each one of the devices. When finished, close the form to return to the main program screen. You will notice newly entered devices listed under *Upstream Protection Device* drop down list in the main program window.



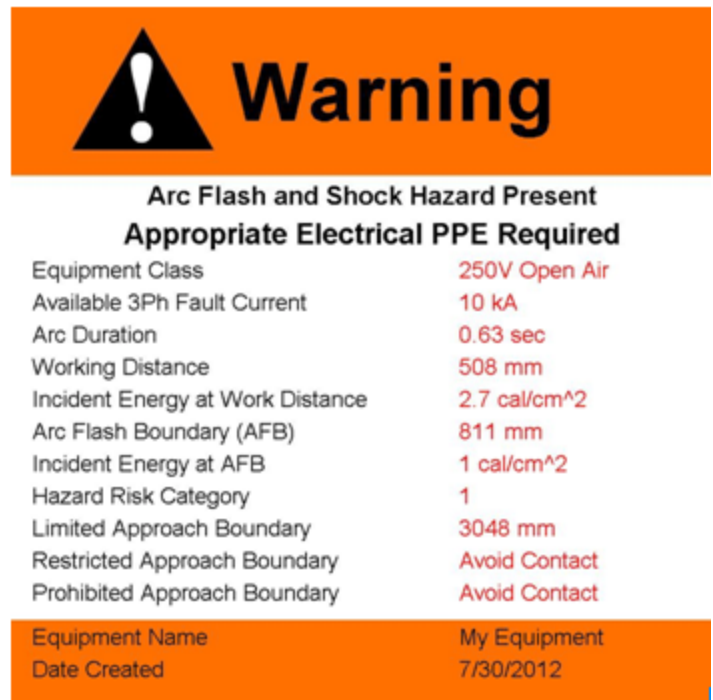
Saving Labels

From *Label Preview* window, click on Save as Image or Save as PDF buttons to save the label in any one of the available electronic formats.

You will need a standard laser or ink jet printer to produce warning labels created using DC Arc Flash Analytic software.

Saving Calculation Results

By pressing the Save Results button from *System Summary and Calculation Results* screen, the results will be saved to a new or an existing text file for future reference or printing.



Equipment Class	250V Open Air
Available 3Ph Fault Current	10 kA
Arc Duration	0.63 sec
Working Distance	508 mm
Incident Energy at Work Distance	2.7 cal/cm ²
Arc Flash Boundary (AFB)	811 mm
Incident Energy at AFB	1 cal/cm ²
Hazard Risk Category	1
Limited Approach Boundary	3048 mm
Restricted Approach Boundary	Avoid Contact
Prohibited Approach Boundary	Avoid Contact
Equipment Name	My Equipment
Date Created	7/30/2012

Note: We offer label printing services. Please visit www.arcadvisor.com website or contact us for more information.

Opening Results Files

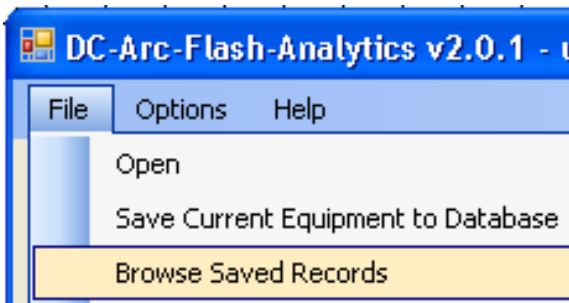
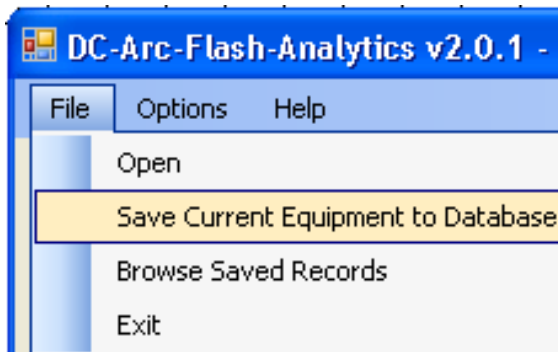
- Click on Open from File menu to open an existing results file, inspect its current content, and do simple editing operations including *Cut*, *Copy* and *Paste* to and from the clipboard, *Save* and *Print*.

If you need more complex editing, import the file into your favorite text manipulation processor (MS Word for example) and do what you need to do.

Saving Equipment Configuration

- Click on Save Current Equipment to the Database from File menu

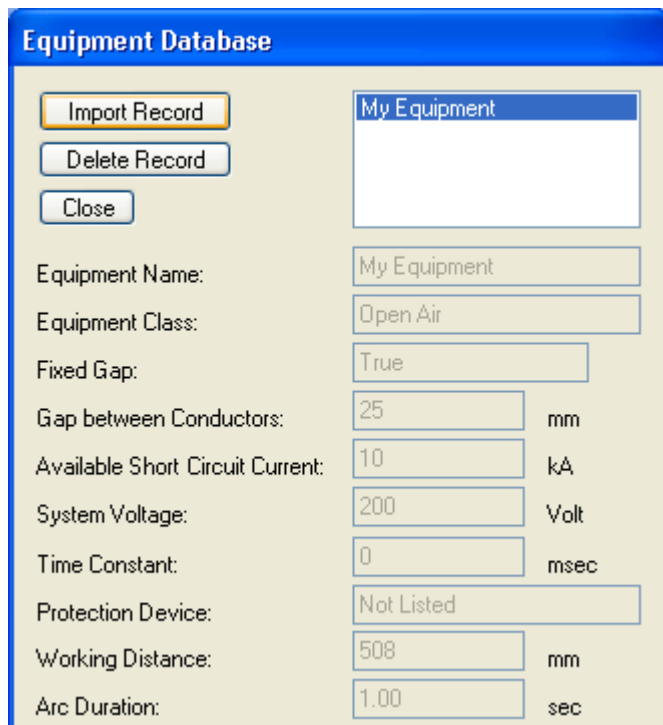
The program will save your existing equipment configuration including equipment name, available short circuit current, system voltage, fixed or variable gap between conductors, circuit time constant, working distance, equipment class, upstream protection device and arc duration.



Importing Equipment Configuration

- Click on Browse Saved Records from File menu to import previously saved equipment configuration.

Use navigation buttons to select a record and click on Import Record button to copy the data into the program main window.



Help With the Program

If you have any question or problems with installation, running the program, arc flash hazard analysis, or creating warning labels using the program tool, please check the program Help or contact us.

Contact Information

ARCAD INC.
1906 - 362 The East Mall
Toronto, ON M9B 6C4
Canada

Phone: 416-551-3457
Fax: 270-573-9840
Web: www.arcadvisor.com

